

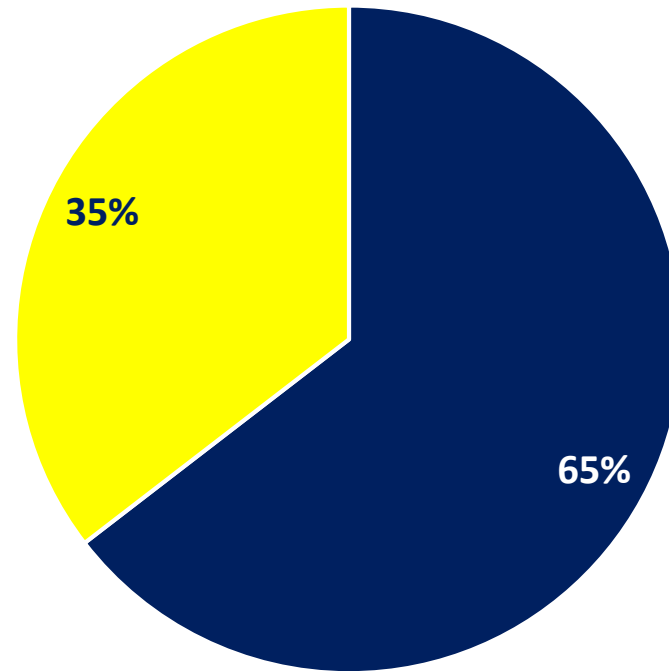


Benteen Elementary School

Renovation/Relocation Presentation

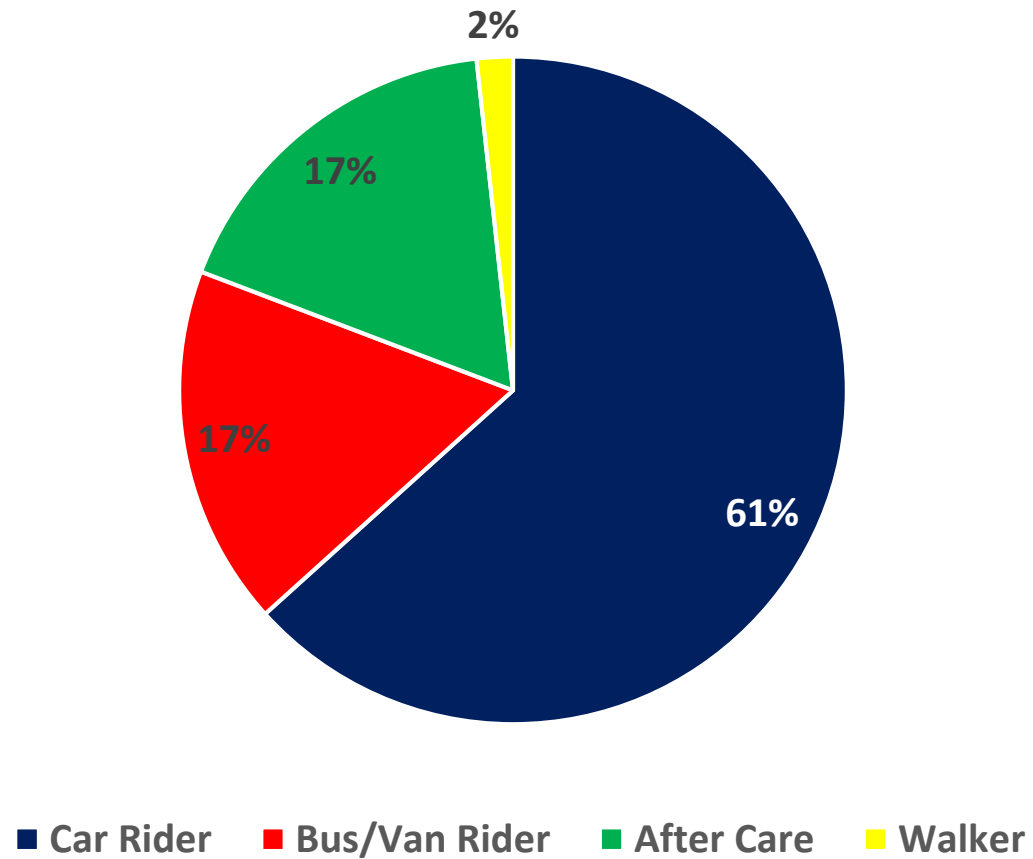
March 17, 2022

Benteen Elementary School Zone vs Out of Zone 2021-2022



■ In Zone ■ Out of Zone

Benteen Dismissal 2021-2022

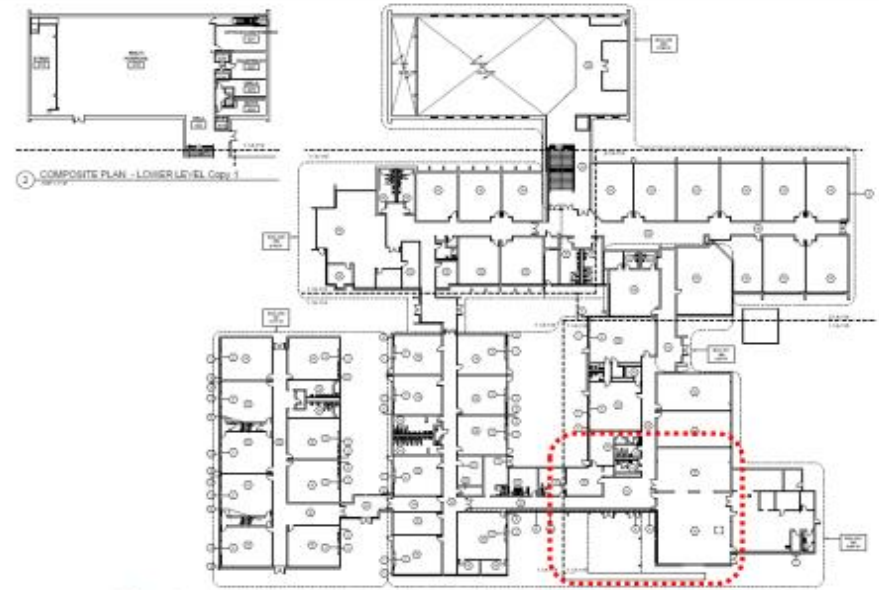


Renovation Updates

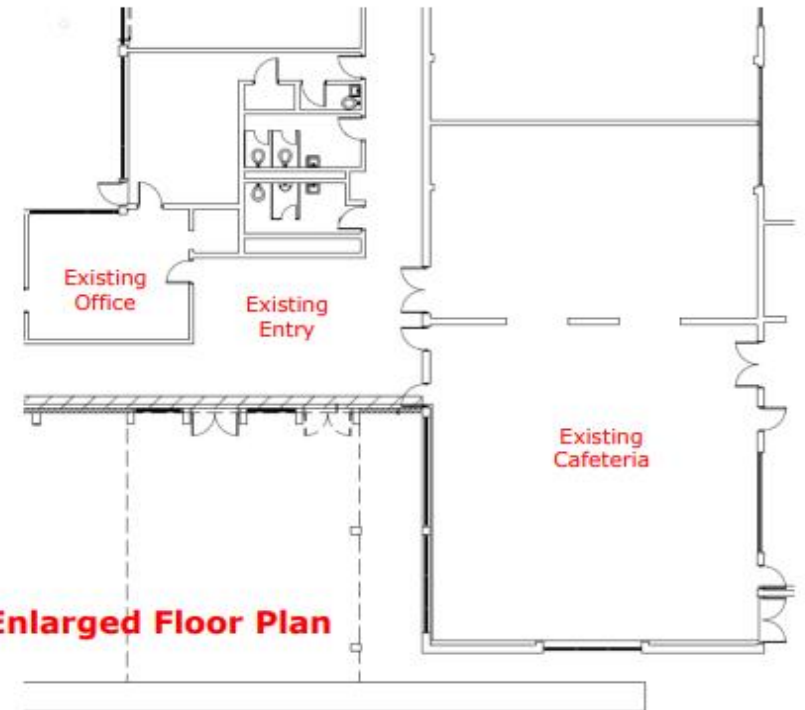
Current Project Scope:

1. HVAC Replacement (*entire building*)
2. Ceiling and Lighting Replacement (*entire building*)
3. New Finish work expanded throughout building
4. New Security Vestibule at the Front Entry
5. Reroofing (*2010 & 2030 buildings*)
6. Restroom Renovations
7. Various landscape work, includes new marquee sign
8. New sprinkler system (*entire building*)
9. New Electrical Service
10. New Low Voltage Systems (*Fire Alarm, Security, Intercom*)

Benteen ES: Existing Entry



Overall Floor Plan



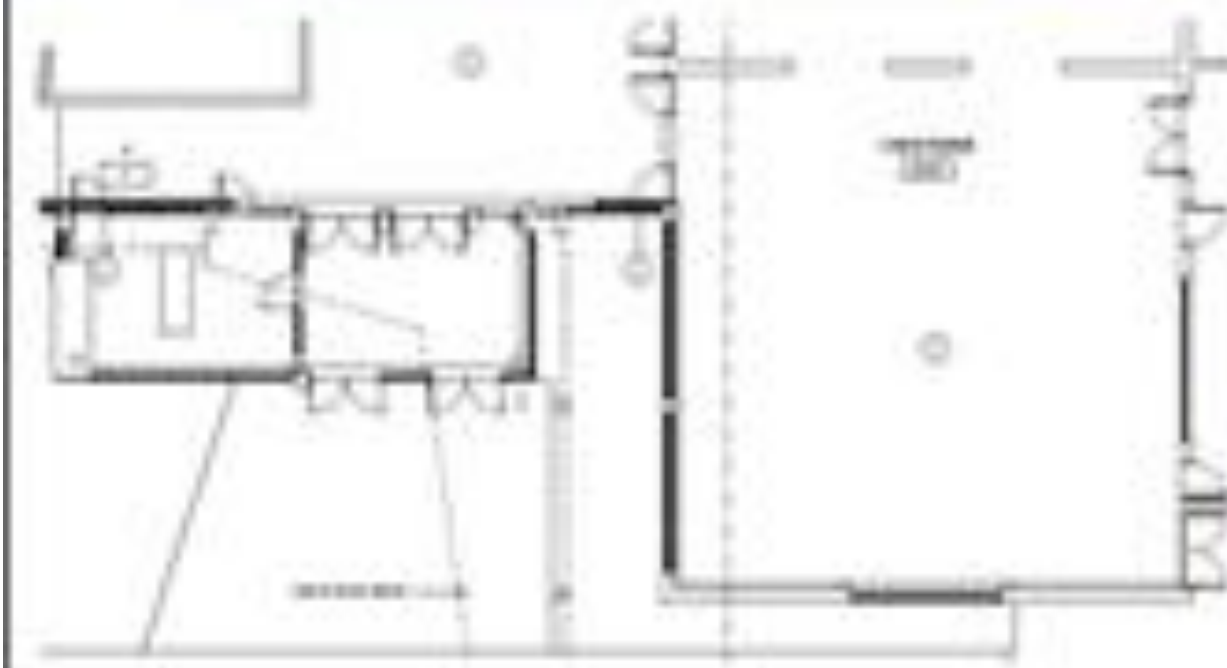
Enlarged Floor Plan



Benteen ES: Proposed Security Vestibule



Bentley ES: Proposed Security Vestibule



Relocation Updates

Benteen ES

- FCA Score 61.23
- 79, 633 square feet
- 24 Core Classrooms
- 5 ESOL, EIP, SWD classes
- Art classroom
- Spanish classroom
- Music/Band/Orchestra classroom
- Gym
- Media Center
- 38 total classrooms



East Lake ES



- Pros
 - Sufficient classrooms to accommodate current programming including DLI and EBD.
 - 28 classrooms
 - 1 gym
 - 1 media center
 - Numerous offices
 - Sufficient office space (SELT, MTSS, Psychologist)
 - In the Jackson Cluster
 - On campus green space for recess

East Lake ES

- Cons
 - Mostly on street parking
 - Distance from Benteen
 - 5.3 -5.9 miles depending on route
 - 66,168 square foot
 - FCA Score 66.55